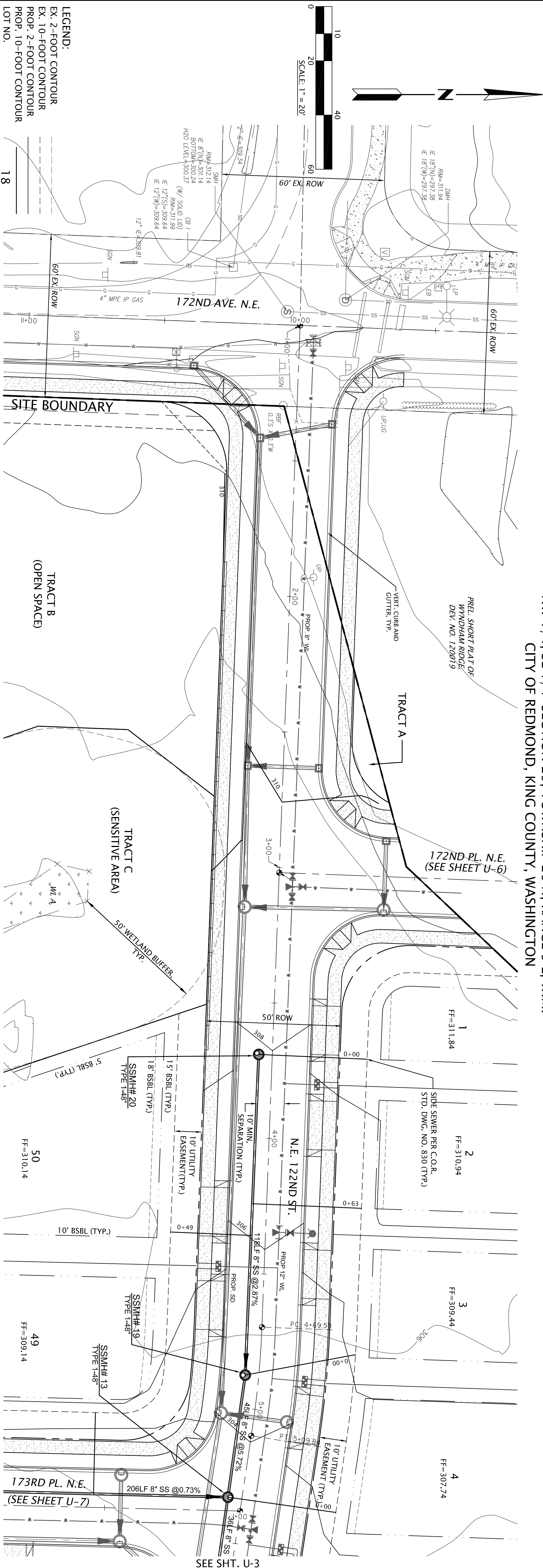


NW 1/4, SE 1/4 SECTION 25, TOWNSHIP 26 N, RANGE 5 E, W.M.
CITY OF REDMOND, KING COUNTY, WASHINGTON

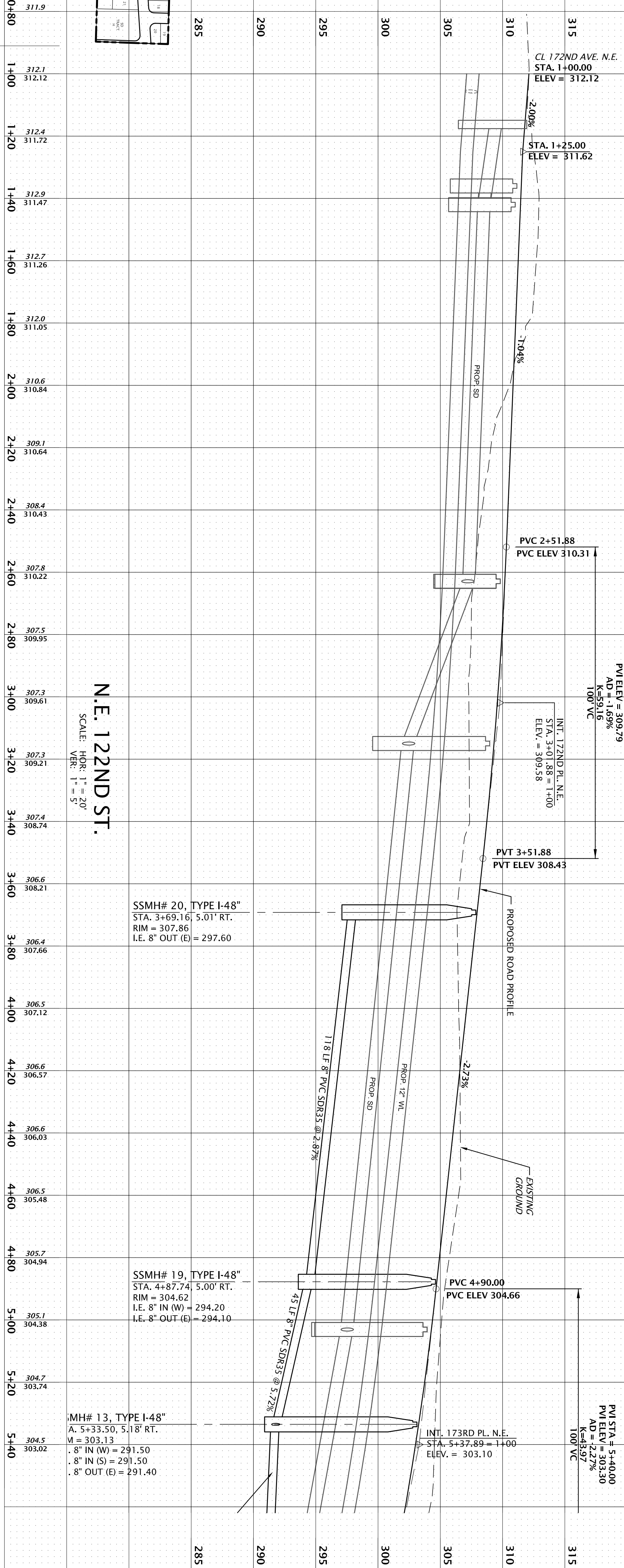
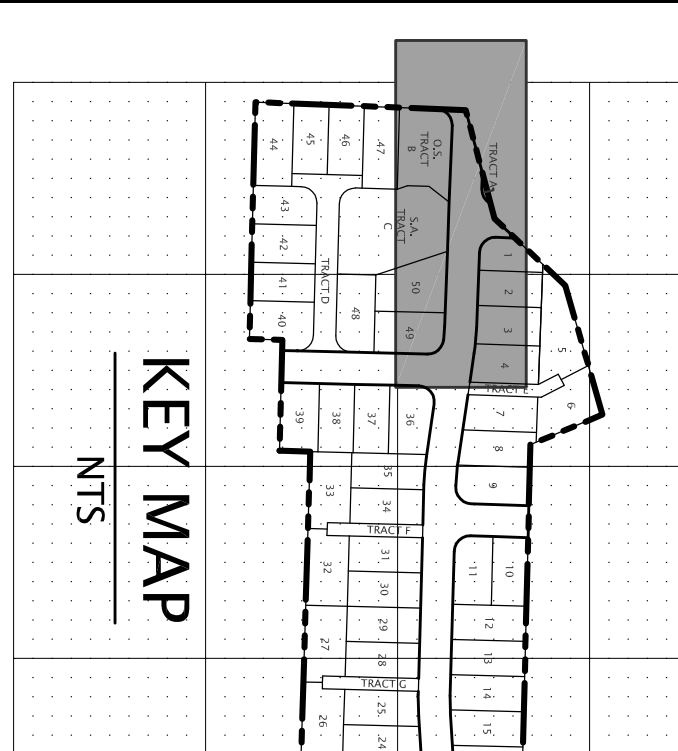


LEGEND:
EX. 2-FOOT CONTOUR
EX. 10-FOOT CONTOUR
PROP. 2-FOOT CONTOUR
PROP. 10-FOOT CONTOUR
LOT NO.

FINISHED FLOOR ELEVATION
PROPOSED SANITARY SEWER PIPE
SANITARY SEWER MANHOLE
EXIST. SANITARY SEWER PIPE
EXIST. SAN. SEWER MANHOLE

SURVEY NOTES:
1. HORIZONTAL DATUM: NAD 83/1983, SPAN WASHINGTON STATE
2. BASIS OF POSITION: FIELD EXISTING MONUMENT IN CASE AT THE SOUTH
3. BASIS OF BEARING: FIELD BEARING OF SOUTH LINE OF THE SOUTHEAST
4. VERTICAL DATUM: NAVD 1988 PER CITY OF REDMOND BENCHMARK
MONUMENT RECORDS DATED JUNE 2009.

MASTER BENCHMARK #1 CITY OF REDMOND B.M. CO# 9182 FOUND
INTERSECTION OF NE 12TH WAY AND 172ND AVENUE NE STAMPEDED
DOWN 0.8 FEET ELEVATION = 312.11 FEET (MAY 1989).
LEGAL DESCRIPTION:
TAX PARCEL: 250905-0033 (SEE SHT. SP-1 FOR LEGAL DESCRIPTION)



QUADRANT HOMES

UTILITY PLAN
N.E. 122ND ST.
EDGEWOOD WEST

REDMOND WASHINGTON

PLOTTED: 2015/06/01 16:07

EMALM

DRAWN: HWERLINGER

DESIGNED: EENSTROM

APPROVED: KGOLOSMITH

ERIK ENSTROM, P.E.
eenstrom@goldsmithengineering.com
425-462-1080

PROJECT MANAGER

GOLDSMITH

LAND DEVELOPMENT SERVICES

1215 114th Ave SE, Bellevue, WA 98004 | PO Box 3565, Bellevue, WA 98009
T 425 462 1080 F 425 462 7719 www.goldsmithengineering.com

KEITH J. GOLDSMITH

STATE OF WASHINGTON

REGISTERED PROFESSIONAL ENGINEER

24569 35169

6/1/15

MARK T. ENSTROM

STATE OF WASHINGTON

REGISTERED PROFESSIONAL ENGINEER

35169

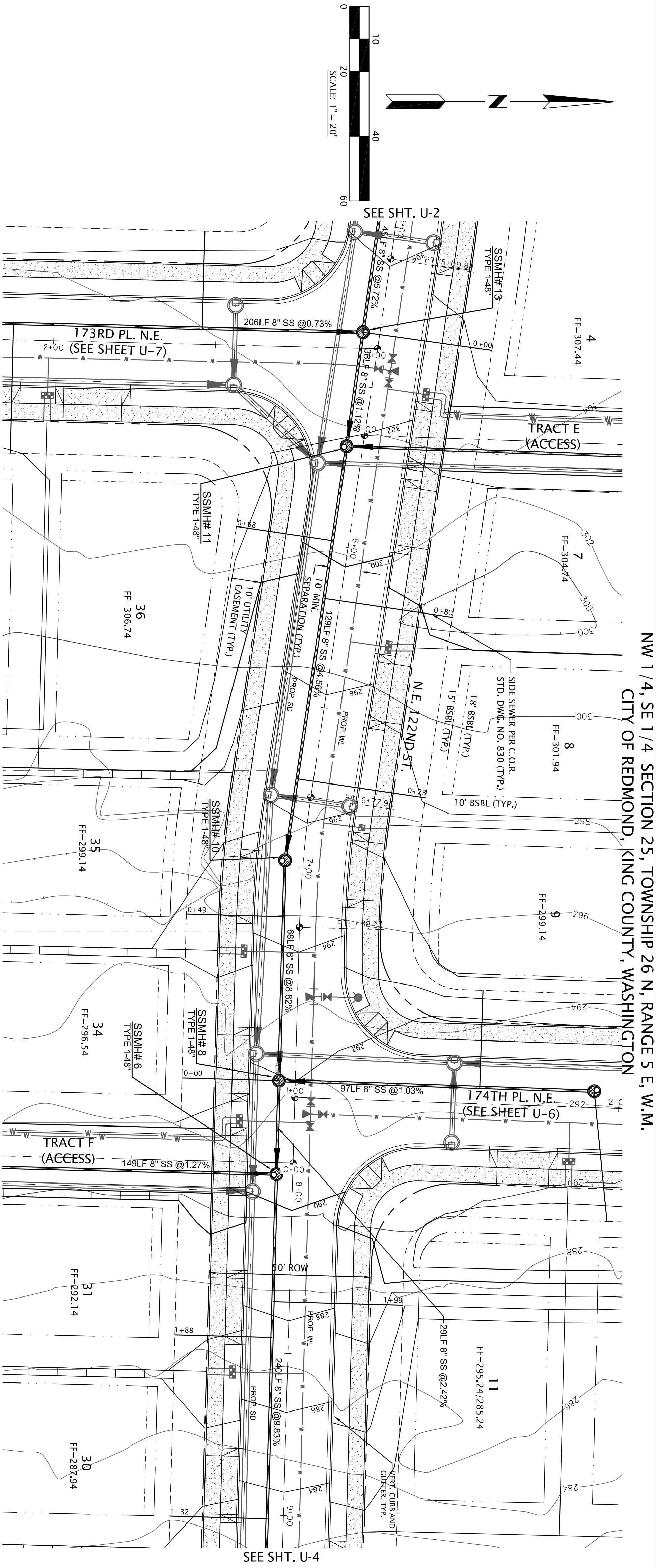
6/1/15

NO.	DATE	REVISIONS	BY	CHK.

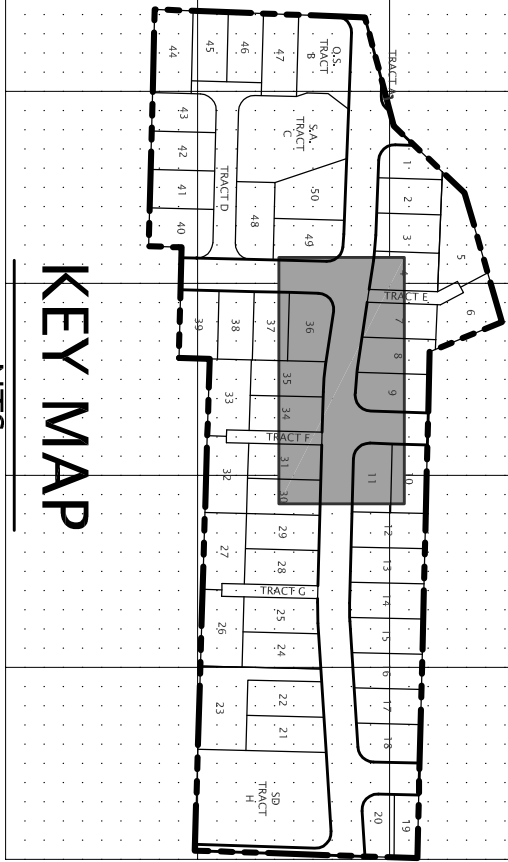
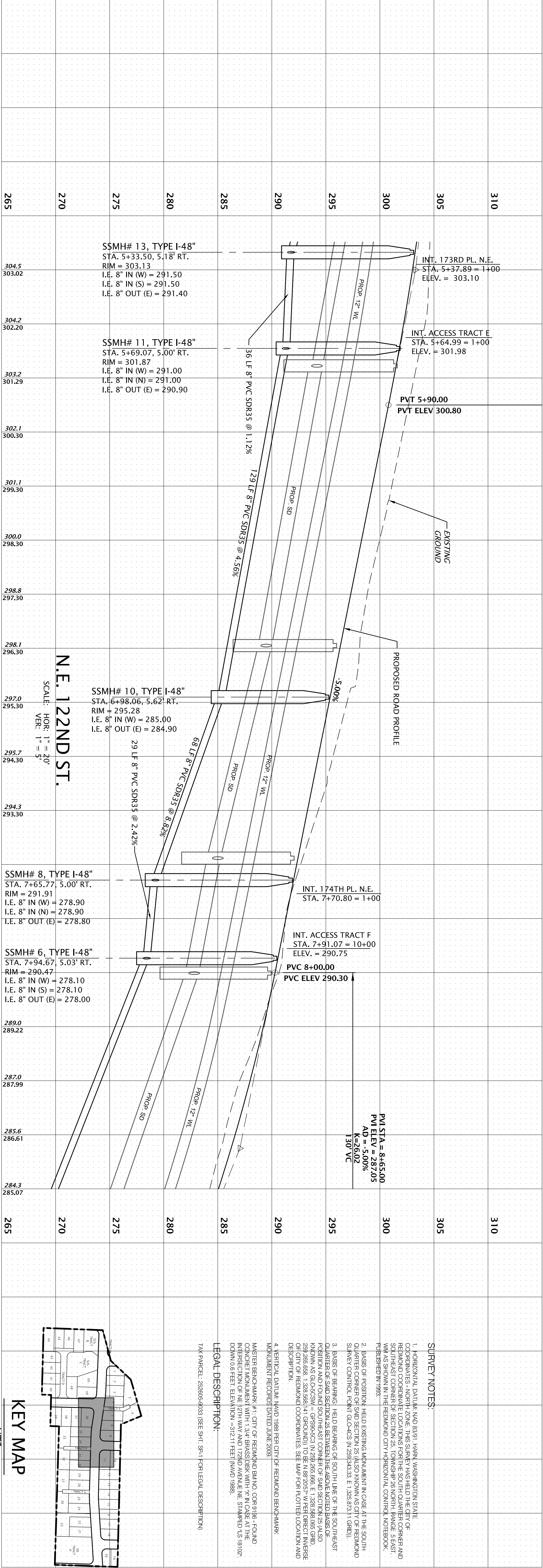
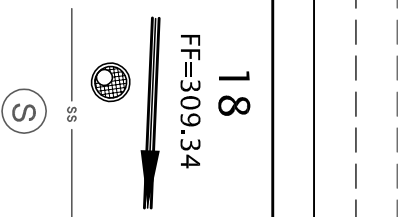
JOB NO.: 14123

SHEET U-2

M:\ACAD\PLAN\14\14123\1P PLAT PLANS\14123501.DWG



- LEGEND:
- EX. 2-FOOT CONTOUR
 - EX. 10-FOOT CONTOUR
 - PROP. 2-FOOT CONTOUR
 - PROP. 10-FOOT CONTOUR
 - LOT NO.
 - FINISHED FLOOR ELEVATION
 - PROPOSED SANITARY SEWER PIPE
 - SANITARY SEWER MANHOLE
 - EXIST. SANITARY SEWER PIPE
 - EXIST. SAN. SEWER MANHOLE



SURVEY NOTES:

- HORIZONTAL DATUM: NAD 83/91 HARN WASHINGTON STATE
- VERTICAL DATUM: NAVD 83/91 HARN WASHINGTON STATE
- REMARK: COORDINATE LOCATIONS FOR THE SOUTH QUARTER CORNER AND SOUTH/EAST CORNER OF SECTION 25, TOWNSHIP 26 NORTH, RANGE 5 EAST, WM AS SHOWN IN THE REDMOND CITY HORIZONTAL CONTROL NOTEBOOK, PUBLISHED IN 1983.
2. BASIS OF BEARING: FIELD EXISTING MONUMENT IN CASE AT THE SOUTH QUARTER CORNER OF S/D SECTION 25 (ALSO KNOWN AS CITY OF REDMOND SURVEY CONTROL POINT GL-0435 (N 289.9433, E 1.325 873.11) (GHD)).
3. BASIS OF POSITION: FIELD EXISTING MONUMENT IN CASE AT THE SOUTH QUARTER CORNER OF S/D SECTION 25 (ALSO KNOWN AS CITY OF REDMOND SURVEY CONTROL POINT GL-0435 (N 289.9433, E 1.325 873.11) (GHD)).
4. QUARTER OF S/D SECTION 25 BETWEEN THE ABOVE NOTED BASIS OF POSITION AND FOURTH SOUTH/EAST CORNER OF S/D SECTION 25 (ALSO KNOWN AS CITY OF REDMOND SURVEY CONTROL POINT GL-0435 (N 289.9433, E 1.325 873.11) (GHD)).
5. INTERSECTION OF NE 12TH WAY AND 172ND AVENUE N.E. STAMPED 1/5/10/02, DOWN 0.6 FEET, ELEVATION = 912.11 FEET (NAD 1983).
6. LEGAL DESCRIPTION: SEE MAP FOR PLOTTED LOCATION AND DESCRIPTION.
7. A VERTICAL DATUM: NAVD 1983 PER CITY OF REDMOND BENCHMARK MONUMENT RECORDS DATED JUNE 2003.
8. MASTER BENCHMARK #1: CITY OF REDMOND B/M NO. 9186 - FOUND AT INTERSECTION OF NE 12TH WAY AND 172ND AVENUE N.E. STAMPED 1/5/10/02, DOWN 0.6 FEET, ELEVATION = 912.11 FEET (NAD 1983).

LEGAL DESCRIPTION:

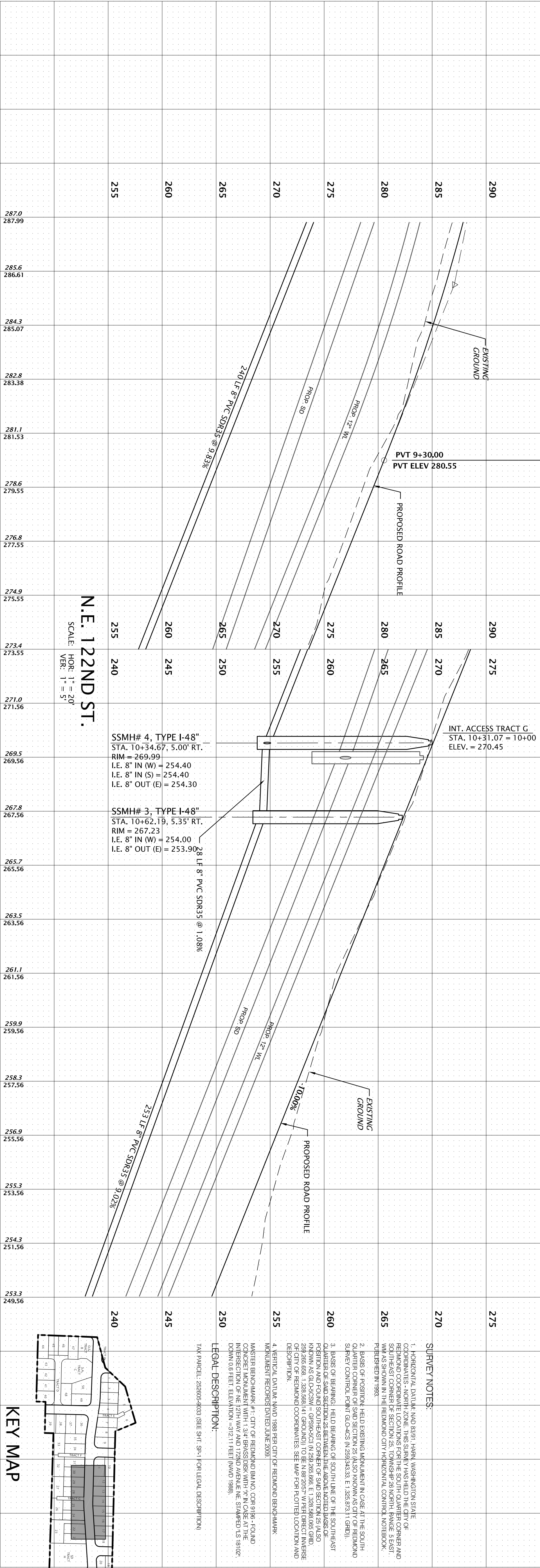
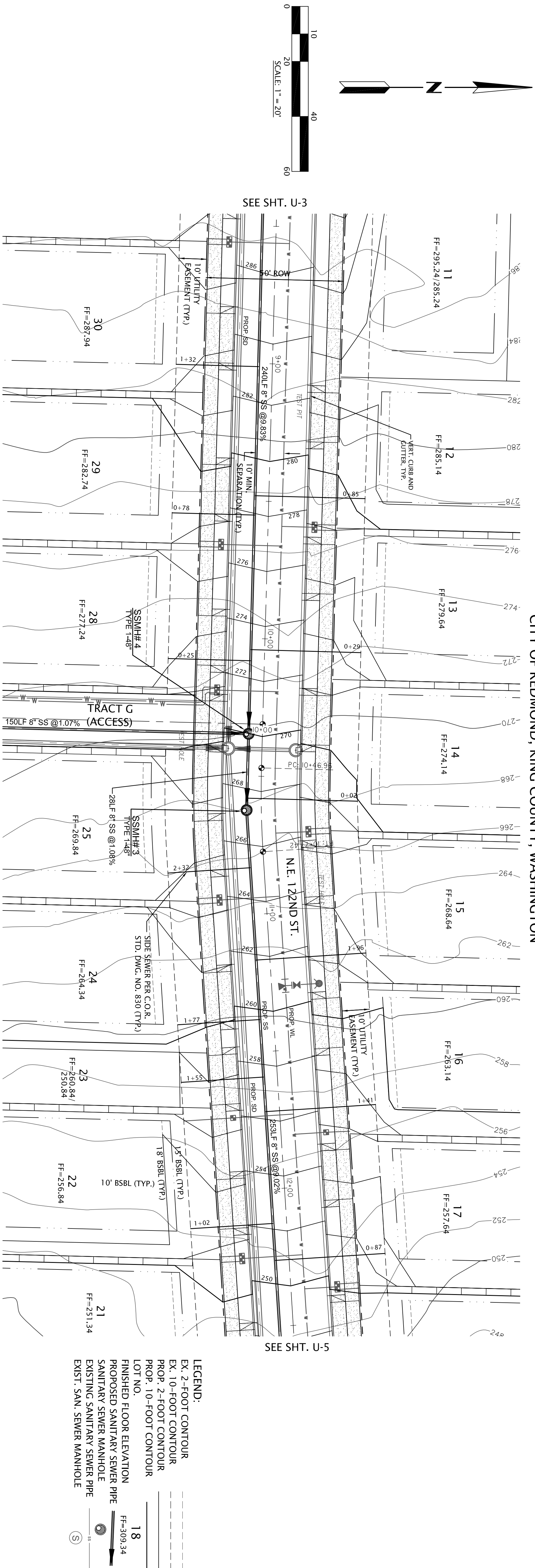
1/4 AC. PARCEL: 262005-0003 (SEE SHT. 59-1 FOR LEGAL DESCRIPTION)

NO.	DATE	REVISIONS	BY	CHK.

QUADRANT HOMES	PLOTTED: 2015/06/01 16:08	EMALM
UTILITY PLAN N.E. 122ND ST. EDGEWOOD WEST	DRAWN: SPASZTOR	
REDMOND	DESIGNED: EENSTROM	
WASHINGTON	APPROVED: KGOLDSMITH	
	ERIK ENSTROM, P.E. eenstrom@goldsmithengineering.com 425-462-1080	
	PROJECT MANAGER	

GOLDSMITH LAND DEVELOPMENT SERVICES 1215 114th Ave SE, Bellevue, WA 98004 PO Box 3565, Bellevue, WA 98009 T 425 462 1080 F 425 462 7719 www.goldsmithengineering.com		
---	--	--

SHEET U-3	JOB NO.: 14123
---------------------	----------------



QUADRANT HOMES

UTILITY PLAN
N.E. 122ND ST.
EDGEWOOD WEST

REDMONDWASHINGTON

PLOTTED: 2015/06/01 16:08

EMALM

DRAWN: SPASZTOR

DESIGNED: EENSTROM

APPROVED: K GOLDSMITH

ERIK ENSTROM, P.E.
eenstrom@goldsmithengineering.com
425-462-1080

PROJECT MANAGER

G

GOLDSMITH

LAND DEVELOPMENT SERVICES

1215 114th Ave SE, Bellevue, WA 98004 | PO Box 3565, Bellevue, WA 98009
T 425 462 1080 F 425 462 7719 www.goldsmithengineering.com

KEITH J. GOLDSMITH

STATE OF WASHINGTON

24597

REGISTERED PROFESSIONAL ENGINEER

6/1/15

MARK T. ENSTROM

STATE OF WASHINGTON

25169

REGISTERED PROFESSIONAL ENGINEER

6/1/15

NO.	DATE	REVISIONS	BY	CHK.

SHEET

U-4

JOB NO.: 14123

QUADRANT HOMES

UTILITY PLAN
N.E. 122ND ST.
EDGEWOOD WEST

REDMONDWASHINGTON

PLOTTED: 2015/06/01 16:08

EMALM

DRAWN: SPASZTOR

DESIGNED: EENSTROM

APPROVED: K GOLDSMITH

ERIK ENSTROM, P.E.
eenstrom@goldsmithengineering.com
425-462-1080

PROJECT MANAGER

G

GOLDSMITH

LAND DEVELOPMENT SERVICES

1215 114th Ave SE, Bellevue, WA 98004 | PO Box 3565, Bellevue, WA 98009
T 425 462 1080 F 425 462 7719 www.goldsmithengineering.com

KEITH J. GOLDSMITH

STATE OF WASHINGTON

24597

REGISTERED PROFESSIONAL ENGINEER

6/1/15

MARK T. ENSTROM

STATE OF WASHINGTON

25169

REGISTERED PROFESSIONAL ENGINEER

6/1/15

NO.	DATE	REVISIONS	BY	CHK.

SHEET

U-4

JOB NO.: 14123

QUADRANT HOMES

UTILITY PLAN
N.E. 122ND ST.
EDGEWOOD WEST

REDMONDWASHINGTON

PLOTTED: 2015/06/01 16:08

EMALM

DRAWN: SPASZTOR

DESIGNED: EENSTROM

APPROVED: K GOLDSMITH

ERIK ENSTROM, P.E.
eenstrom@goldsmithengineering.com
425-462-1080

PROJECT MANAGER

G

GOLDSMITH

LAND DEVELOPMENT SERVICES

1215 114th Ave SE, Bellevue, WA 98004 | PO Box 3565, Bellevue, WA 98009
T 425 462 1080 F 425 462 7719 www.goldsmithengineering.com

KEITH J. GOLDSMITH

STATE OF WASHINGTON

24597

REGISTERED PROFESSIONAL ENGINEER

6/1/15

MARK T. ENSTROM

STATE OF WASHINGTON

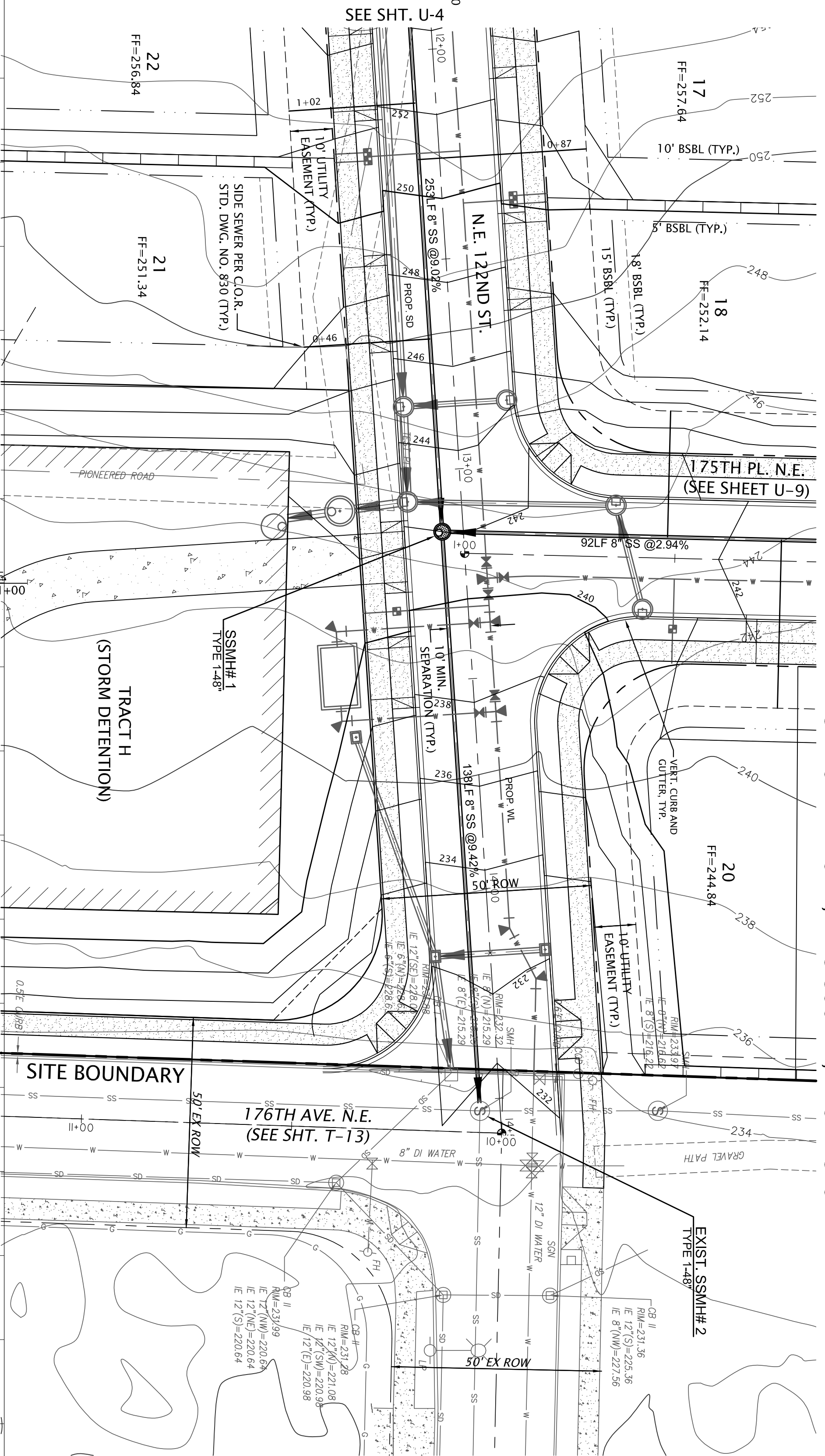
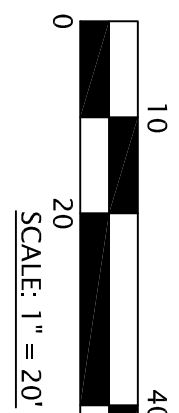
25169

REGISTERED PROFESSIONAL ENGINEER

6/1/15

NO.	DATE	REVISIONS	BY	CHK.

1"X 1" PLOT: 250'X 300' (SEE SHT. U-3 FOR LEGAL DESCRIPTION)



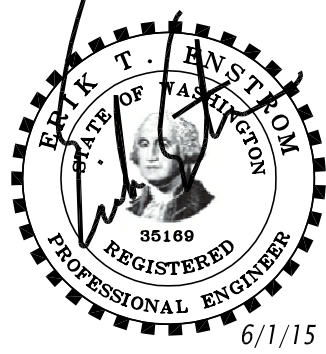
NW 1/4, SE 1/4 SECTION 25, TOWNSHIP 26 N, RANGE 5 E, W.M.
CITY OF REDMOND, KING COUNTY, WASHINGTON

LEGEND:

EX. 2-FOOT CONTOUR
EX. 10-FOOT CONTOUR
PROP. 2-FOOT CONTOUR
PROP. 10-FOOT CONTOUR
LOT NO.
FINISHED FLOOR ELEVATION
PROPOSED SANITARY SEWER PIPE
SANITARY SEWER MANHOLE
EXISTING SANITARY SEWER PIPE
EXIST. SAN. SEWER MANHOLE

18
FF=309.34

SURVEY NOTES:

[illegible]

GOLDSMITH
LAND DEVELOPMENT SERVICES

1215 114th Ave SE, Bellevue, WA 98004 | PO Box 3565, Bellevue, WA 98009
T 425 462 1080 F 425 462 7719 | www.goldsmithengineering.com

EMALM

PLOTTED: 2015/06/01 16:09

DRAWN: SPASZTOR

DESIGNED: EENSTROM

APPROVED: KGOLDSMITH

ERIK ENSTROM, P.E.
eenstrom@goldsmithengineering.com
425-462-1080

PROJECT MANAGER

QUADRANT HOMES

UTILITY PLAN
N.E. 122ND ST.
EDGEWOOD WEST

REDMOND

WASHINGTON

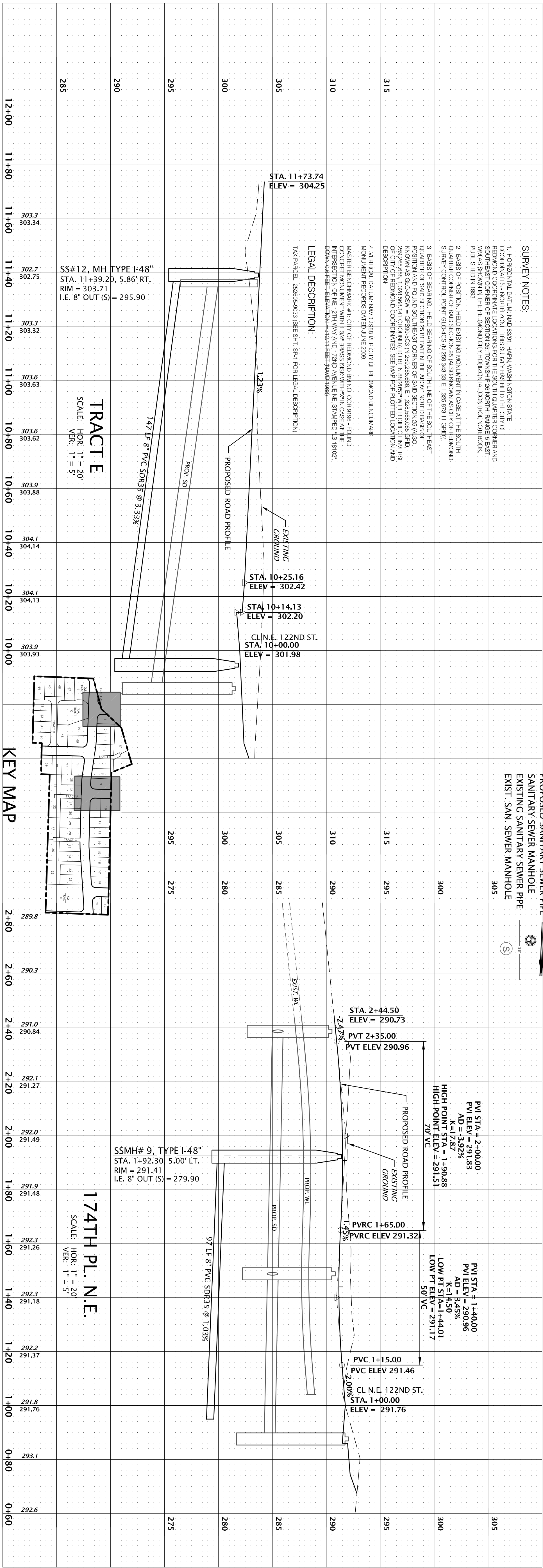
M:\ACAD\PLAN\14\14123\P PLAT PLANS\14123S04.DWG

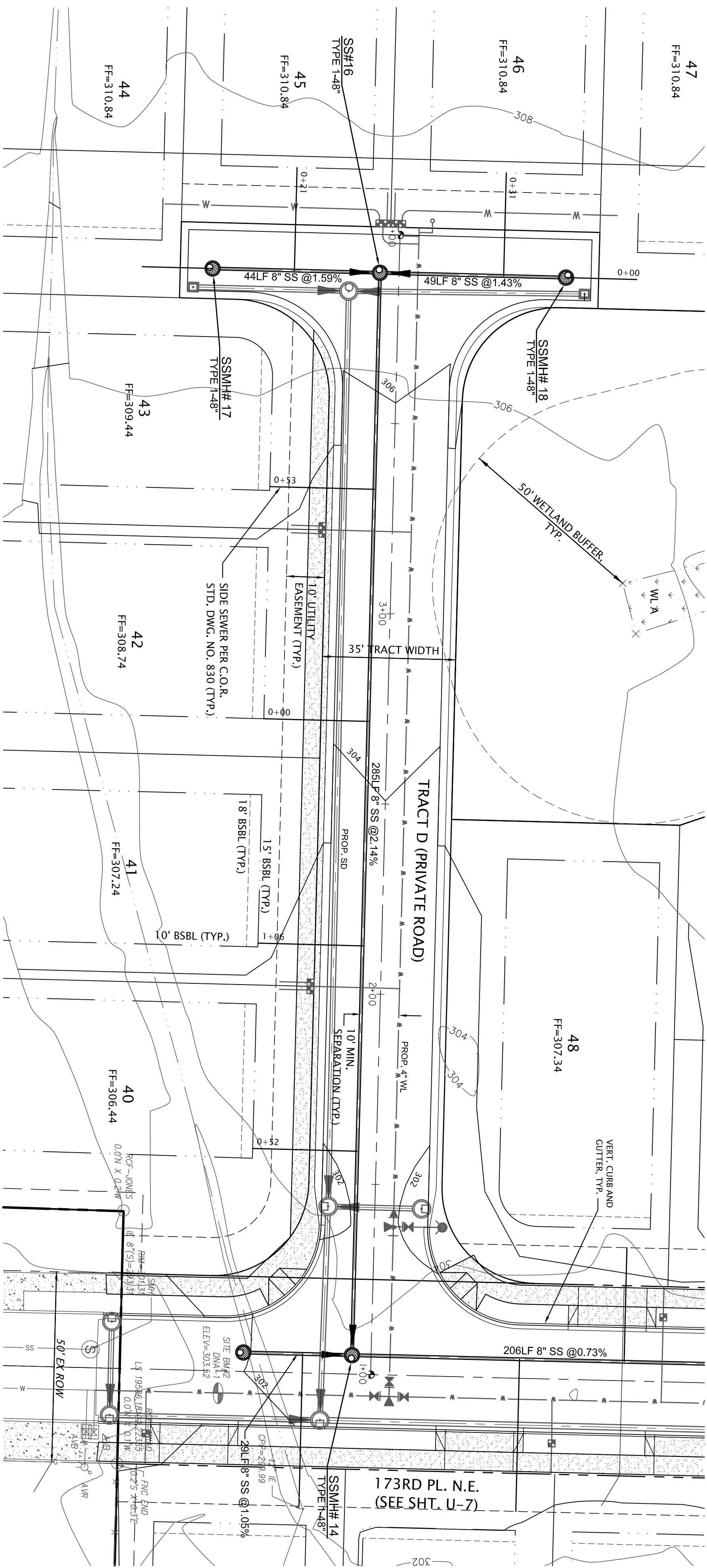
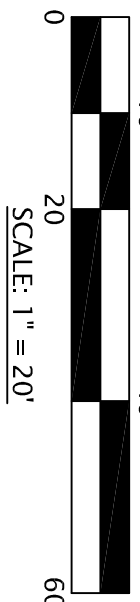
KEY MAP

NTS

SHEET
U-5

JOB NO.: 14123

[illegible]



NW 1/4, SE 1/4 SECTION 25, TOWNSHIP 26 N, RANGE 5 E, W.M.
CITY OF REDMOND, KING COUNTY, WASHINGTON

LEGEND:

EX. 2-FOOT CONTOUR	---
EX. 10-FOOT CONTOUR	---
PROP. 2-FOOT CONTOUR	---
PROP. 10-FOOT CONTOUR	---
LOT NO.	---
FINISHED FLOOR ELEVATION	---
PROPOSED SANITARY SEWER PIPE	---
SANITARY SEWER MANHOLE	---
EXISTING SANITARY SEWER PIPE	---
EXIST. SAN. SEWER MANHOLE	---

FF=309.34

55

(S)

SURVEY NOTES:

1. HORIZONT: DATUM: NAD 83/91, HARN, WASHINGTON STATE COORDINATES - NORTH ZONE. THIS SURVEY HAS HELD THE CITY OF REDMOND COORDINATE LOCATIONS FOR THE SOUTH QUARTER CORNER AND SOUTHEAST CORNER OF SECTION 25, TOWNSHIP 26 NORTH, RANGE 5 EAST, WM AS SHOWN IN THE REDMOND CITY HORIZONTAL CONTROL NOTEBOOK, PUBLISHED IN 1993.

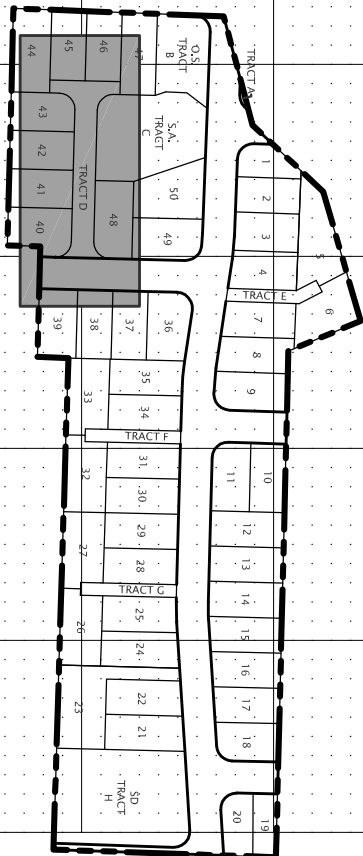
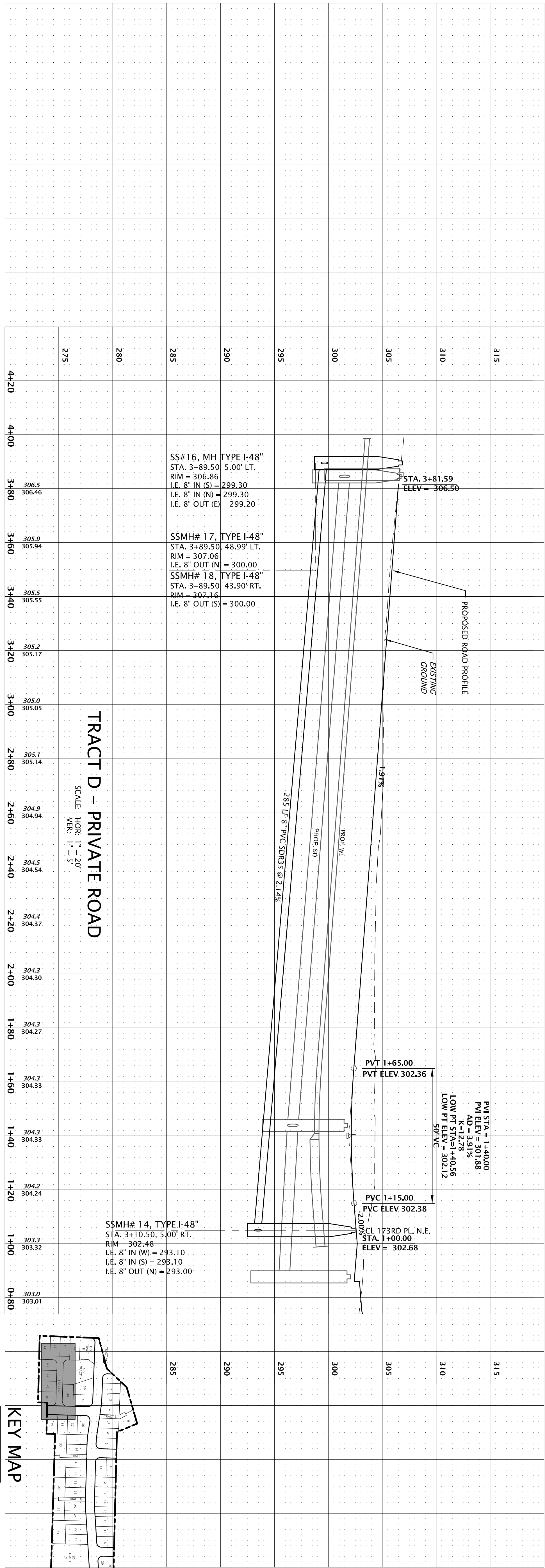
3. BASIS OF BEARING: HELD BEARING OF SOUTHERLY LINE OF THE SOUTHEAST QUARTER OF SAID SECTION 23 BETWEEN THE ABOVE NOTED BASIS OF POSITION AND FOUND SOUTHEAST CORNER OF SAID SECTION 25 (ALSO KNOWN AS GLO-605-0-0-0) IS GRFS90-0-0-0 IN 259.666 666' E, 328.688 666' EAS. GRID, 259.265 666', 328.666 141' (ROUND) IN N 88°20'57" E IN 268.205 667' E. INTERSECTION OF CITY OF FREEDOM COORDINATES. SEE MAP FOR PLOTTED LOCATION AND DESCRIPTION.

7. EDITORIAL BOARD: 2007 EDITORIAL BOARD RECORDS DATED JUNE 2009

INTERSECTION OF NE 12TH WAY AND 72ND AVENUE NE, STAMFORD, LA 58102,
DOWN 0.6 FEET. ELEVATION = 312.11 FEET (NAVD 1988).

LEGAL DESCRIPTION:

TAX PARCEL: 252605-9033 (SEE SHT. SP-1 FOR LEGAL DESCRIPTION)

[illegible]

NTS

KEY MAP

JOB NO.: 14123

U-8

QUADRANT HOMES

UTILITY PLAN
TRACT D – PRIVATE ROAD
EDGEWOOD WEST

REDMOND WASHINGTON

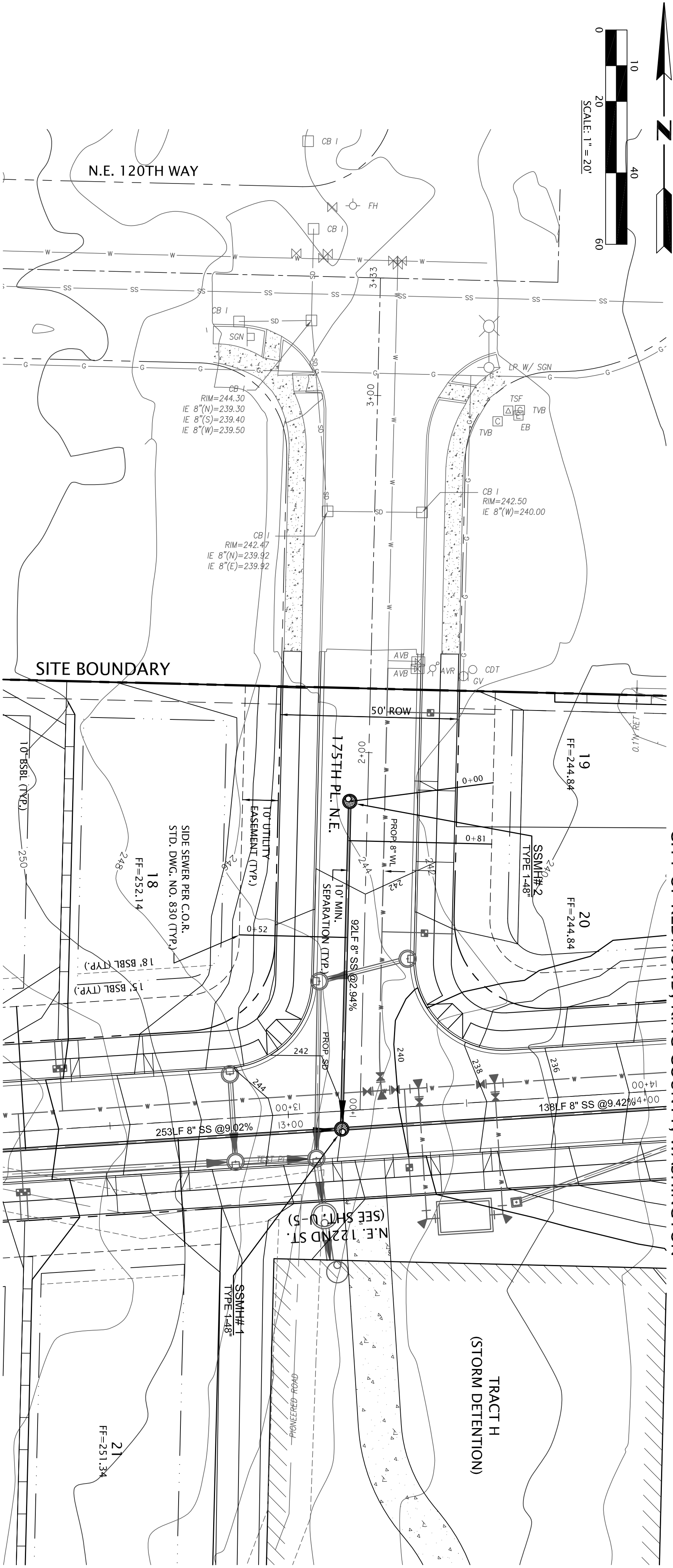
PLOTTED: 2015/06/01 16:11 DRAWN: SPASZTOR DESIGNED: EENSTROM APPROVED: KGOLDSMITH	EMALM
ERIK ENSTROM, P.E. eenstrom@goldsmithengineering.com 425-462-1080 <hr/> PROJECT MANAGER	



GOLDSMITH
LAND DEVELOPMENT SERVICES

1215 114th Ave SE, Bellevue, WA 98004 | PO Box 3565, Bellevue, WA 98009
T 425 462 1080 F 425 462 7719 | www.goldsmithengineering.com

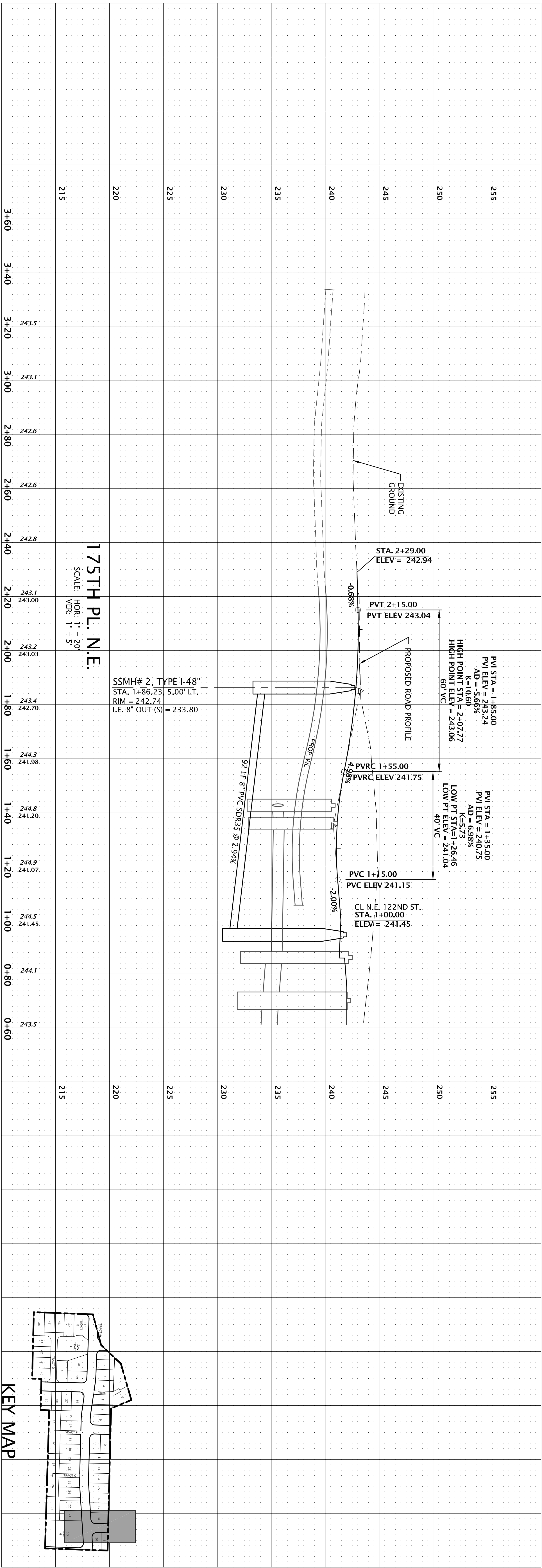
M:\ACAD\PLAN\14\14123\PLAT PLANS\14123S07.DWG



- LEGEND:**
- EX. 2-FOOT CONTOUR
 - EX. 10-FOOT CONTOUR
 - PROP. 2-FOOT CONTOUR
 - PROP. 10-FOOT CONTOUR
 - LOT NO.
 - FINISHED FLOOR ELEVATION
 - PROPOSED SANITARY SEWER PIPE
 - SANITARY SEWER MANHOLE
 - EXIST. SAN. SEWER MANHOLE

SURVEY NOTES:

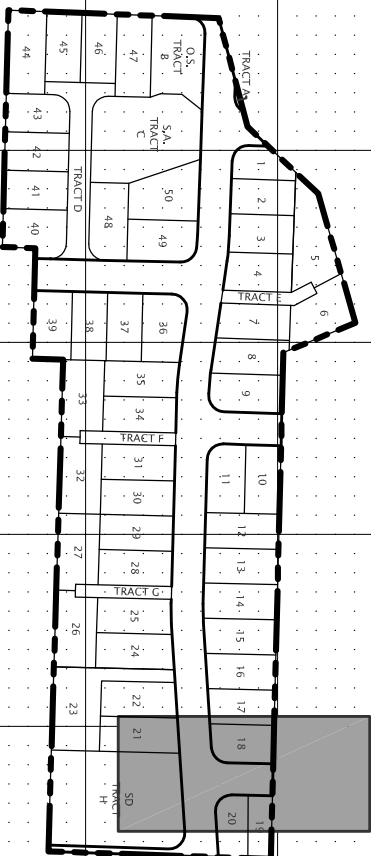
- HORIZONTAL DATUM: NAD 83/91, HARN, WASHINGTON STATE.
 - VERTICAL DATUM: NAVD 83, MEAN SEA LEVEL OF THE CITY OF REDMOND. COORDINATE LOCATIONS FOR THE SOUTH QUARTER CORNER AND SOUTHEAST CORNER OF SECTION 25, TOWNSHIP 28 NORTH, RANGE 5 EAST, WM AS SHOWN IN THE REDMOND CITY HORIZONTAL CONTROL NOTEBOOK, PUBLISHED IN 1993.
 - BASES OF POSITION: FIELD EXISTING MONUMENT IN CASE AT THE SOUTH QUARTER CORNER OF SAID SECTION 25 (ALSO KNOWN AS CITY OF REDMOND SURVEY CONTROL POINT GLO-435 (N 259143.31 E 1325.673.11 GMD)).
 - BASES OF BEARING: FIELD BEARING OF SOUTHLINE OF THE SOUTHEAST QUARTER OF SAID SECTION 25 BETWEEN THE ABOVE NOTED BASES OF POSITION AND SOUTHEAST CORNER OF SAID SECTION 25 (ALSO KNOWN AS GLO-258 (N 141.050' AND 10.0' BE 189.57) WHERE DIRECT INTERSECT OF CITY OF REDMOND COORDINATES. SEE MAP FOR PLOTTED LOCATION AND DESCRIPTION.
 - VERTICAL DATUM: NAVD 1988 PER CITY OF REDMOND BENCHMARK MONUMENT RECORDS DATED JUNE 2009.
 - MASTER BENCHMARK #1: CITY OF REDMOND B.M. CO# 9198 - FOUND INTERSECTION OF N.E. 12TH WAY AND 122ND AVENUE, N.E. STAMPED 125.8102', DOWN 0.6 FEET ELEVATION -3121.11 FEET (MAY 1988).
- LEGAL DESCRIPTION:**
- TAX PARCEL: 25905-9093 (SEE SHT. SP-1 FOR LEGAL DESCRIPTION)



175TH PL. N.E.

SCALE: HOR. 1" = 20'
VER. 1" = 5'

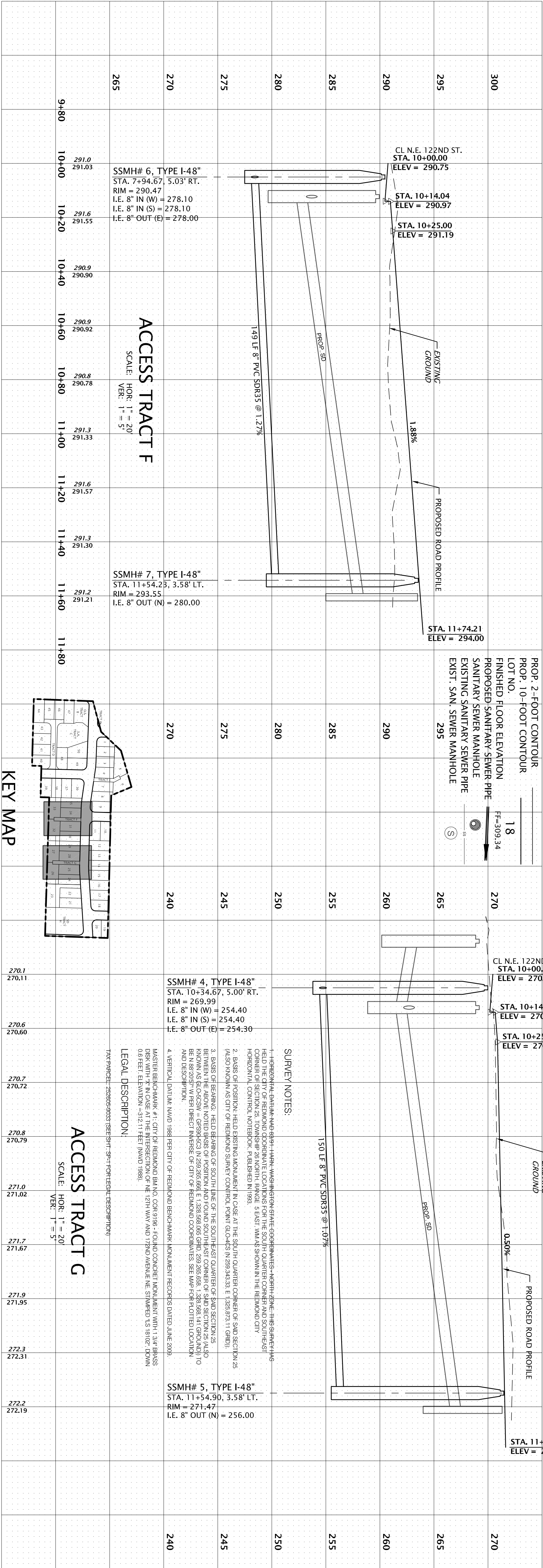
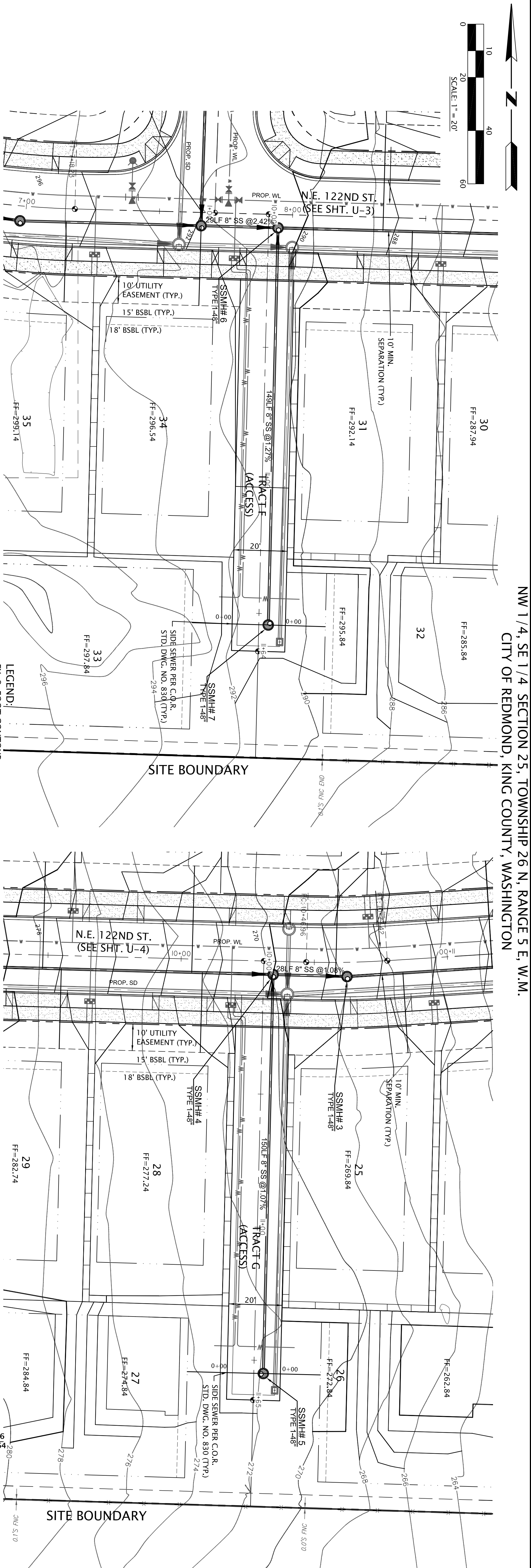
SSMH# 2, TYPE I-48"
STA. 1+86.23, 5.00' LT.
RIM = 242.74
I.E. 8" OUT (S) = 233.80



KEY MAP

NTS

JOB NO.: 14123	SHEET U-9	QUADRANT HOMES UTILITY PLAN 175TH PL. N.E. EDGEWOOD WEST REDMOND WASHINGTON	PLOTTED: 2015/06/01 16:11	EMALM						
			DRAWN: SPASZTOR DESIGNED: EENSTROM APPROVED: KGOLDSMITH ERIK ENSTROM, P.E. eenstrom@goldsmithengineering.com 425-462-1080 PROJECT MANAGER							
M:\ACAD\PLAN\141\14123\175TH PL. N.E. PLAT PLANS\14123508.DWG			 GOLDSMITH LAND DEVELOPMENT SERVICES 1215 114th Ave SE, Bellevue, WA 98004 PO Box 3565, Bellevue, WA 98009 T 425 462 1080 F 425 462 7719 www.goldsmithengineering.com		 6/1/15	 6/1/15	NO. DATE	REVISIONS	BY	CHK.



JOB NO.: 14123	SHEET U-10	QUADRANT HOMES	PLOTTED: 2015/06/01 16:12	EMALM		
		UTILITY PLAN ACCESS TRACTS F AND G EDGEWOOD WEST	DRAWN: SPASZTOR			
			DESIGNED: EENSTROM			
			APPROVED: KGOLDSMITH			
REDMOND	WASHINGTON	ERIK ENSTROM, P.E. eenstrom@goldsmithengineering.com 425-462-1080 PROJECT MANAGER				
M:\ACAD\PLAN\141\14123\14123510.P			GOLDSMITH LAND DEVELOPMENT SERVICES 1215 114th Ave SE, Bellevue, WA 98004 PO Box 3565, Bellevue, WA 98009 T 425 462 1080 F 425 462 7719 www.goldsmithengineering.com			